



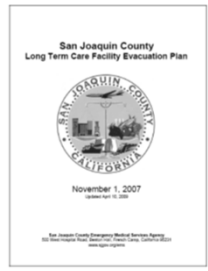
San Joaquin County
Emergency Medical Services Agency

Long Term Care Facility
Evacuation Plan
Training



San Joaquin County
Emergency Medical Services Agency

- Welcome
- Introductions
- Objective:
 - Provide participants with an understanding of the LTCF Evacuation Plan, and their role in the plan.



Long Term Care Evacuation Plan



San Joaquin County
Emergency Medical Services Agency

- At the conclusion of this training session participants will be able to:
 - Identify the purpose and authority of the plan
 - Identify the related emergency management policies (ICS, mutual aid, etc.)
 - Explain the three Emergency Evacuation Destination Categories (Levels I, II, III)

Long Term Care Evacuation Plan



San Joaquin County

Emergency Medical Services Agency



■ be able to

- Explain the four Evacuation Status Categories (Status A, B, C & D)
- Identify the difference between an emergent and planned evacuation
- Identify the difference between a single and multiple facility evacuation

Long Term Care Evacuation Plan



San Joaquin County

Emergency Medical Services Agency



■ be able to

- Explain how to activate this plan and the required notifications
- Describe how to “Shelter-in-Place” and explain when this action would be preferred over an evacuation
- How to incorporate the county plan with the facility’s evacuation plan

Long Term Care Evacuation Plan



San Joaquin County

Emergency Medical Services Agency



■ be able to

- Complete the forms (LTC 401, 402, 403, etc)
- Use the Facility Evacuation Checklist and Flowchart
- Signup to receive alerts from the California Health Alert Network (CAHAN)

Long Term Care Evacuation Plan



San Joaquin County

Emergency Medical Services Agency



■ be able to

- Explain why you want to activate the plan early
- Explain that you do not lose control of your facility by activating this plan



TEAM WORK

Long Term Care Evacuation Plan



San Joaquin County

Emergency Medical Services Agency



■ Purpose and Authority

- This plan is intended for all Long Term Care Facilities in San Joaquin County.
- Issued under the joint authority of the San Joaquin County Emergency Medical Services Agency Administrator and the San Joaquin County Public Health Officer.

(California Health and Safety Code, Division 2.5, Article 4, Sections 1797.150)

Long Term Care Evacuation Plan



San Joaquin County

Emergency Medical Services Agency



■ Objective and Related Policies

- Use of the Incident Command System (ICS)
- Control of Patient Dispersal
- Mutual Aid
- Emergency Evacuation Destination Categories
- Evacuation Status Categories

Long Term Care Evacuation Plan



San Joaquin County
Emergency Medical Services Agency



■ Objective

- The objective of this plan is to ensure the orderly and timely movement of patients/residents from single or multiple facilities which need to be evacuated to a safe location.

Long Term Care Evacuation Plan



San Joaquin County
Emergency Medical Services Agency

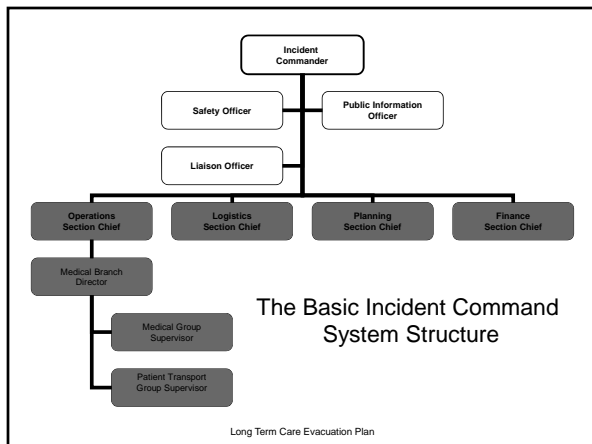


■ Incident Command System

- Once the decision is made to evacuate a facility, the facility will be designated an incident site. A Unified Incident Command will be established at the facility, which will be comprised of facility officials and other public safety agencies with jurisdictional or statutory authority (EMS, Public Health, Fire, Law, etc.)



Long Term Care Evacuation Plan





San Joaquin County
Emergency Medical Services Agency



■ Incident Command System

- For more information about ICS and FREE online training go to the FEMA website <http://training.fema.gov/IS/crslst.asp>
 - IS-100.HCb Introduction to the ICS for Healthcare/Hospitals
 - IS-200.HCa Applying ICS to Healthcare Organizations
 - IS-700.a National Incident Management System
 - IS-800.b National Response Framework

Long Term Care Evacuation Plan



San Joaquin County
Emergency Medical Services Agency



■ Control of Patient Dispersal

- During a single facility emergent evacuation San Joaquin General Hospital, acting as the Operational Area Disaster Control Facility, will determine all patient destinations other than movement to home settings.
- During single or multiple facility planned evacuations patient dispersal will be coordinated by the EMS Agency Duty Officer (Medical Health Operational Area Coordinator) in conjunction with the facility officials, and the Incident Commander(s).

Long Term Care Evacuation Plan



San Joaquin County
Emergency Medical Services Agency



■ Mutual Aid

- Medical mutual aid requests will be coordinated by the Medical Health Operational Area Coordinator (MHOAC) in compliance with the Standardized Emergency Management System (SEMS) and the National Incident Management System (NIMS).

Long Term Care Evacuation Plan



San Joaquin County
Emergency Medical Services Agency



■ Evacuation Status Categories

- During planned multiple facility evacuations field level response personnel, under the direction of the Incident Commander, will make contact with each Long Term Care Facility in the evacuation zone. Each facility will be evaluated on their ability to evacuate and placed into one of four Evacuation Status Categories. See Form LTC 402

Long Term Care Evacuation Plan



San Joaquin County
Emergency Medical Services Agency



■ Evacuation Status Categories

- STATUS A: The facility has a destination identified for its patients/residents and can evacuate/transport without assistance from outside agencies
- STATUS B: The facility does not have a destination identified for its patients/residents but can evacuate/transport its residents without assistance from outside agencies if provided a destination.

Long Term Care Evacuation Plan



San Joaquin County
Emergency Medical Services Agency



■ Evacuation Status Categories

- STATUS C: The facility has a destination identified for its patients/residents and only requires evacuation/transportation assistance from outside agencies.
- STATUS D: The facility does not have a destination identified for its patients/residents and requires evacuation/transportation assistance from outside agencies.


Long Term Care Evacuation Plan

FACILITY NAME: Best Care In Town DATE: 11/1/07
 REPRESENTATIVE NAME: Ima Gonatakecareofyou TIME: 1433
 CONTACT MADE BY: Joe Rescue, City Fire Department

Form LTC 402
Enter the Evacuation Status Category



EVACUATION STATUS CATEGORIES for LONG TERM CARE FACILITIES	
EVACUATION STATUS DESCRIPTIONS	STATUS
STATUS A The facility <u>has</u> a destination identified for its patients/residents and <u>can evacuate/transport</u> without assistance from outside agencies.	X
STATUS B The facility <u>does not have</u> a destination identified for its patients/residents but <u>can evacuate/transport</u> its residents without assistance from outside agencies if provided a destination.	
STATUS C The facility <u>has</u> a destination identified for its patients/residents and only <u>requires evacuation/transportation assistance</u> from outside agencies.	
STATUS D The facility <u>does not have</u> a destination identified for its patients/residents and <u>requires evacuation/transportation assistance</u> from outside agencies.	
COMMENTS The facility can handle the evacuation on their own. Will start transporting patients/residents by 1500 hours.	
<small>FORM LTC 402 INSTRUCTIONS: During planned multiple facility evacuations, field level response personnel will make contact with each Long Term Care Facility in the evacuation zone. Each facility will be evaluated on their ability to evacuate and placed into one of four Evacuation Status Categories. Use the form to document your contact and assessment. Communicate your findings up the chain of command immediately.</small>	

← Instructions


 **San Joaquin County**
Emergency Medical Services Agency

■ **Evacuation Procedures** (Single & Multiple Facilities)

- Two Types of Evacuations:
 1. Emergent
 2. Planned

Long Term Care Evacuation Plan

 **San Joaquin County**
Emergency Medical Services Agency

■ **Evacuation Procedures**

- **Emergent Evacuation**
 - An unplanned spontaneous movement of patients/residents out of the facility due to an immediate threat that renders the facility unsafe for occupancy.

Long Term Care Evacuation Plan



San Joaquin County

Emergency Medical Services Agency



■ Evacuation Procedures

- Example of an Emergent Evacuation:
 - A fire breaks out in the facility prompting the immediate evacuation of all patients/residents and staff. Property damage is severe and the facility is determined to be unsafe for occupancy. Patients/residents are transported to other facilities for care.



Long Term Care Evacuation Plan



San Joaquin County

Emergency Medical Services Agency



■ Evacuation Procedures

• Planned Evacuation

A planned evacuation is defined as a situation where the threat to the facility is not immediate and time is available to conduct orderly patient/resident movement. Patients/residents can remain within the facility without danger to their well being for a limited amount of time until relocation arrangements are made.

Long Term Care Evacuation Plan



San Joaquin County

Emergency Medical Services Agency

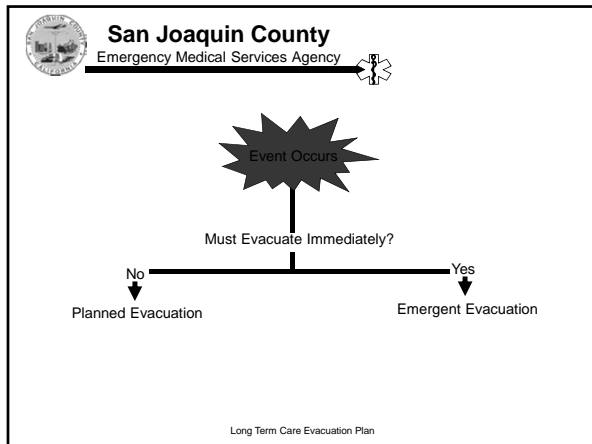


■ Evacuation Procedures

- Example of a Planned Evacuation:
 - A facility experiences an air conditioning system failure at 6:00 AM. Temperatures are forecasted to reach a high of 110 degrees by 4:30 PM. Facility officials determine that if they are unable to repair the air conditioning system in time they will need to evacuate patients/residents to another facility. Adequate time is available to make arrangements for patients/residents to be moved to other facilities in the area.



Long Term Care Evacuation Plan



San Joaquin County
Emergency Medical Services Agency

■ Evacuation Procedures

- Emergent Notifications:
 - Facility Notices
 - 9-1-1
 - Once it is assured that all patients/residents have been removed from harm's way, the evacuating facility is responsible to notify applicable State and county authorities.

Long Term Care Evacuation Plan

San Joaquin County
Emergency Medical Services Agency

■ Evacuation Procedures

- Emergent Notifications
 - State Licensing Authorities:
 - California Department of Public Health Licensing & Certification
 - Dept. of Social Services/Community Care Licensing
 - County Authorities:
 - EMS Agency Duty Officer
 - Public Health Services
 - Human Services Agency Ombudsman
 - Behavioral Health Services/Public Conservator Office

Long Term Care Evacuation Plan



San Joaquin County
Emergency Medical Services Agency



■ Evacuation Procedures

- Emergent Notifications:
 - Medical Group or Patient Transportation Supervisor notifies:
 - Disaster Control Facility – San Joaquin General Hospital



Long Term Care Evacuation Plan



San Joaquin County
Emergency Medical Services Agency



■ Evacuation Procedures

- Emergent Notifications:
 - Disaster Control Facility (DCF) notifies:
 - Acute Care Hospitals
 - EMS Agency Duty Officer
 - Acute Care Hospitals notifies:
 - Designated Skilled Nursing Facilities



Long Term Care Evacuation Plan

Appendix D

Assignment of Skilled Nursing Facilities to Acute Care Hospitals

Dameron Hospital	485-3166
Delta Valley DNF	486-8341
Plymouth Square DNF	486-4341
Windsor Memorial Care Center	486-2648
Wagner Heights Nursing - Renais.	477-6332
Windsorling Hosp. Care Center	477-3024
Doctor's Hospital Manteca	239-8301
Pain Haven DNF	823-1724
Lodi Memorial Hospital	338-7576
Rebel Convalescent Hospital	332-1322
Crescent Court Nursing Home	367-7420
Delta Rehab. Center	334-3626
Farmington Rehabilitation	369-2482
Yuba County Care Center	334-3762
Lodi Memorial Hospital TCU	333-3342
Valencia Nursing Rehab. Center	368-7743
Kaiser Hospital Manteca	825-3555
Bethany Home	899-4221
Kaiser DNF	826-3626
Manteca Care and Rehab Center	239-1322
Saint Joseph's Medical Center	476-6400
Golden Living Center - Manteca	477-2271
LaSalle Rehabilitation Center	466-2264
Madison House	866-2444
St. Joseph Medical Center DNF	487-4394
Valley Gardens Health Care Center	367-4639
San Joaquin General Hospital	486-5301
Golden Living Center - Pacifica	486-3822
Golden Living Center - Chateau	477-2884
Orchard House	477-2262
Windsor Rehabilitation Care Center	477-2262
Good Samaritan DNF	943-4742
Ceresdale Care Center (Meritage)	479-6448
Sutter Tracy Community Hospital	832-8918
New Hope Care Center	832-2273
Tracy Convalescent	839-4024



San Joaquin County

Emergency Medical Services Agency



- Disaster Control Facility/Acute Care Hospital - Skilled Nursing Facility Evacuation Procedures
 - The Disaster Control Facility will contact all acute care hospitals in San Joaquin County.
 - Each hospital Emergency Department will be notified by the Disaster Control Facility of the evacuation by EMSysystem® and/or MCI "Blast Phone".
 - Each acute care hospital will contact their assigned Skilled Nursing Facilities and obtain the number of patients/residents each can accept.

Long Term Care Evacuation Plan



San Joaquin County

Emergency Medical Services Agency



- Disaster Control Facility/Acute Care Hospital - Skilled Nursing Facility Evacuation Procedures
 - The hospitals will report back to the Disaster Control Facility, on the MCI "Blast Phone", the number(s) of patients/residents each of their assigned Skilled Nursing Facilities can accept.
 - The DCF will instruct the Medical Group Supervisor, or Patient Transportation Group Supervisor if assigned, where to take each patient/resident.

Long Term Care Evacuation Plan



San Joaquin County

Emergency Medical Services Agency



- Disaster Control Facility/Acute Care Hospital - Skilled Nursing Facility Evacuation Procedures
 - The DCF will track the number of patients/residents transported to each destination.
 - The Patient Transportation Group Supervisor and facility personnel share the responsibility for tracking the name(s) and destination(s) of each patient/resident.

Long Term Care Evacuation Plan



San Joaquin County
Emergency Medical Services Agency



■ Evacuation Procedures

- Planned Evacuation Notifications:
 - Facility Notifies
 - EMS Agency Duty Officer
 - Applicable State and county authorities



Long Term Care Evacuation Plan



San Joaquin County
Emergency Medical Services Agency



■ Evacuation Procedures

- Planned Evacuation Notifications:
 - EMS Agency Duty Officer notifies:
 - Local fire and law enforcement
 - Other outside agencies and organizations as needed (Public Health Services, Ambulance providers, OES, etc.)



Long Term Care Evacuation Plan



San Joaquin County
Emergency Medical Services Agency



■ Evacuation Procedures

- Planned Patient Movement:
 - The evacuating facility will implement its Emergency Operations Plan. The senior facility administrator will remain available to work with the responding EMS Agency Duty Officer to form a Unified Command. The facility administrator working as part of the Unified Command must have the authority to evacuate the facility and make time critical financial decisions.

Long Term Care Evacuation Plan



San Joaquin County

Emergency Medical Services Agency



Evacuation Procedures

Planned Patient Movement:

- There will be three destination options for patient/resident movement:
 1. Home Setting
 2. Like Facility
 3. Alternate Care Site



Long Term Care Evacuation Plan



San Joaquin County

Emergency Medical Services Agency



Evacuation Procedures

Planned Patient Movement:

- Alternate Care Site

In this case, staff from the evacuating facility will accompany and stay with patients/residents in the Alternate Care Site



Long Term Care Evacuation Plan



San Joaquin County

Emergency Medical Services Agency



Evacuation Procedures

Medical Control (Planned Evacuations):

- The patient's or resident's physician will continue to render care to their patient. The receiving facility will notify physicians of the temporary transfer of patients to the new facility.



Long Term Care Evacuation Plan



San Joaquin County

Emergency Medical Services Agency



Evacuation Procedures

- Planned Evacuation Medical Control:
 - The evacuating facility is responsible for ensuring that all patients are moved with the following items physically with them:
 - Pertinent Personal and Medical information
 - Name of patient's or resident's physician and telephone number
 - Resident Identification (Arm Band or Disaster Tag)
 - Medications for a minimum of seventy-two hours
 - Change of clothes

Long Term Care Evacuation Plan



San Joaquin County

Emergency Medical Services Agency



Evacuation Procedures

- Shelter-In-Place
 - Patients/residents remain indoors and are moved to a safe refuge within the facility. Windows and doors are closed and the ventilation system closed to outside air.



Long Term Care Evacuation Plan



San Joaquin County

Emergency Medical Services Agency



Evacuation Procedures

- Shelter-In-Place
 - **Example:** A train derailment occurs two miles upwind from the facility. One of the railcars, containing 180,000 pound of chlorine (a toxic gas), is leaking. Emergency personnel on scene estimate that the toxic gas will travel approximately five miles downwind, and advises the Incident Commander to issue a shelter-in-place order for all downwind residents and businesses within five miles of the release.

Long Term Care Evacuation Plan



San Joaquin County
Emergency Medical Services Agency



■ Evacuation Procedures

- Shelter-In-Place (Chlorine Railcar Release)



Long Term Care Evacuation Plan

Implement this plan for a chemical release, if advised to Shelter-in-Place by emergency officials.

Shelter-In-Place Checklist

- X Notify employees, visitors, patients/residents and vendors to Shelter-in-Place. (Sample message: "May I have your attention, please. San Joaquin County emergency authorities have advised us of a chemical emergency nearby. For your safety, everyone is requested to stay inside and Shelter-in-Place until we are notified that the emergency is over.")
- X If you have a designated sheltering location with few windows and doors, ask people to move to that area. The area should have access to restrooms and drinking water.
- X Close and lock windows. Secure doors – a better seal is achieved by locking doors. Post sign "Shelter-in-Place in Effect - Controlled Entry" at main door or window. Location where sign is kept: _____ Administration Office
- X Shut off heating, air conditioning or other ventilation system so outside air is not drawn indoors.

List locations where HVAC must be shut down and vents closed.	
1.	_____
2.	North Engine Room _____
3.	_____
4.	_____

- X Turn on AM radio and tune to KFBK 1530 to listen for further instructions. Location of radio at this facility: _____ Administration Office
- X Seal cracks around doors and windows (and any vents that do not close) with damp towels, duct tape, plastic sheeting, etc. Location where sealing supplies are kept: _____ Engineering
- Do not dial 9-1-1 unless you have an emergency that requires an immediate response. Keep lines free for emergency communication.
- After the emergency is over and county officials announce an "all clear" via the Emergency Alert System (EAS) and/or news media. Open doors and windows and air out the facility. Account for all employees, visitors, patients/residents and vendors. Turn heating, air conditioning and/or ventilation systems back on. Remove "Controlled Entry" sign. Replace/restock all emergency supplies, radio batteries, etc.



San Joaquin County
Emergency Medical Services Agency



■ Evacuation Procedures – Multiple Facilities

- In the event that more than one facility must be evacuated due to threatening conditions affecting a large geographic area, these procedures will become the guide for response and evacuation operations.
- The procedures of the single facility evacuation will only remain operative to the extent that they conform to these procedures.

Long Term Care Evacuation Plan



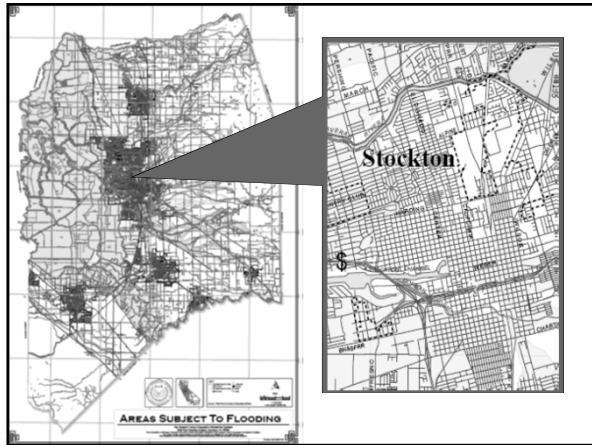
San Joaquin County
Emergency Medical Services Agency

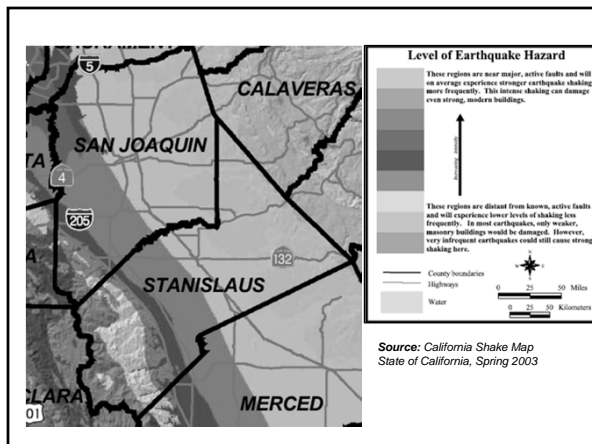


■ **Evacuation Procedures – Multiple Facilities**

- The most likely events that could require the nearly simultaneous evacuation of multiple facilities are as follows:
 - A flood or threatened flood within a geographic area of the county.
 - Extended loss of critical utilities over a large area that presents a health risk to patients/residents in more than one facility.
 - A major earthquake that creates the extended loss of critical utilities as discussed in item 2 above, and/or renders multiple facilities unsafe for occupancy due to structural damage.

Long Term Care Evacuation Plan







San Joaquin County
Emergency Medical Services Agency



- Evacuation Procedures – Multiple Facilities
 - **Example:** A nearby river has been at flood stage and is now forecasted to reach danger stage within twenty-four hours, creating a significant risk of a levee failure and widespread flooding. Government officials have issued an evacuation order for the area of greatest risk. The evacuation area includes a mixture of residential and commercial property, as well as five Long Term Care Facilities.

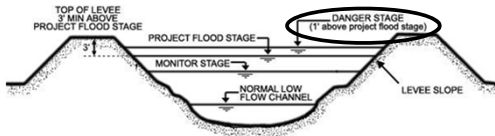
Long Term Care Evacuation Plan



San Joaquin County
Emergency Medical Services Agency



■ River Stages



Long Term Care Evacuation Plan



San Joaquin County
Emergency Medical Services Agency



- Evacuation Procedures
 - Multiple Facility Emergent Evacuation Notifications:
 - In addition the EMS Duty Officer will send out a California Health Alert Network (CAHAN) Alert to all Long Term Care Facilities in the county notifying them of the emergent evacuation and requesting information on how many patients/residents they are able to receive.
 - See the CAHAN User Request Form

Long Term Care Evacuation Plan

San Joaquin County Long Term Care Facility
CAHAN User Request Form
This form is used by Long Term Care Facilities in San Joaquin County to sign up to receive emergency alerts and messages through the California Health Alert Network (CHAN).

Facility Name: _____
 Facility Address: _____
 Types of Long Term Care Facility:

Residential Facilities:
 Adult Retirement Community
 Adult/Children Residential Facility (ARF)
 Assisted Living Facility
 Continuing Care Retirement Community (CCRC)
 Institute for Mental Health (IMH/ITP)
 Intermediate Care Facility (ICF)
 Intermediate Care Facility for the Developmentally Disabled (ICF/DD)
 Residential Care Facility for the Chronically ill
 Residential Care Facility for the Elderly (RCFE)
 Skilled Nursing Facility (SNF)
 Social Rehabilitation Facility
 Sub-Acute Care Facility

Non-Residential Facilities:
 Adult Day Health Care (ADHC)
 Adult/Children Day Care Facility (ADCF)
 Other (Please Specify): _____

Name: _____
 Position / Title: _____
 Work Telephone: _____
 Work Email: _____

Instructions: Complete this form and fax to the San Joaquin County Emergency Medical Services Agency 209-468-6725.

Questions: Contact Philip Cook, Chief of Medical Health Services, at 209-468-6810 or email pcook@sjgov.org

Complete this form
 and fax to the
 San Joaquin County
 EMS Agency
 209-468-6725



← Instructions

San Joaquin County
 Emergency Medical Services Agency

Command and Control

- Upon activation of this plan, the EMS Agency Administrator and the Public Health Officer will establish the Medical/Health Branch at the Operational Area Emergency Operations Center (EOC), or in close communications with the Operational Area EOC, to perform functions identified in this plan.
- The Medical/Health Branch will work with elements of the community medical system as well as city, regional, and State officials to coordinate and control operations affecting community medical and Long Term Care Facilities.

Long Term Care Evacuation Plan

San Joaquin County
 Emergency Medical Services Agency

Facility Contact & Evacuation Capability Assessment

- Affected jurisdictions will identify which Evacuation Zones are affected by the evacuation order
- The field level Incident Commander(s) will manage the evacuation within their jurisdiction(s).

Long Term Care Evacuation Plan



San Joaquin County
Emergency Medical Services Agency



- Facility Contact & Evacuation Capability Assessment
 - Evacuation Maps have been prepared for each Evacuation Zone and contain lists of known critical facilities, including Long Term Care Facilities.
 - <http://www.sjmap.org/evacmaps/>

Long Term Care Evacuation Plan



San Joaquin County
Emergency Medical Services Agency



- Facility Contact & Evacuation Capability Assessment
 - The Incident Commander will use these lists to ensure that contact is made with each Long Term Care Facility listed for the following purposes:
 - Ensure that the facility has received the evacuation order.
 - Assess the facility's ability to carry out the evacuation order. This assessment will place the facility in one of four Evacuation Status Categories (A to D). See Form LTC 402

Long Term Care Evacuation Plan


FACILITY NAME: Best Darn Care In Town, Inc. DATE: 11/1/07
 REPRESENTATIVE NAME: Ima Gonatakecareofyou TIME: 1433
 CONTACT MADE BY: Joe Rescue, City Fire Department

EVACUATION STATUS CATEGORIES for LONG TERM CARE FACILITIES	
EVACUATION STATUS DESCRIPTIONS	STATUS
STATUS A The facility has a destination identified for its patients/residents and can evacuate/transport without assistance from outside agencies.	X
STATUS B The facility does not have a destination identified for its patients/residents but can evacuate/transport its residents without assistance from outside agencies if provided a destination.	
STATUS C The facility has a destination identified for its patients/residents and only requires evacuation/transportation assistance from outside agencies.	
STATUS D The facility does not have a destination identified for its patients/residents and requires evacuation/transportation assistance from outside agencies.	
COMMENTS The facility can handle the evacuation on their own. Will start transporting patients/resident by 1500 hours.	

FORM LTC 402 INSTRUCTIONS: During planned multiple facility evacuations, field level response personnel will make contact with each Long Term Care Facility in the evacuation zone. Each facility will be evaluated on their ability to evacuate and placed into one of four Evacuation Status Categories. Use this form to document your contact and assessment. Communicate your findings up the chain of command immediately.


Form LTC 402
Enter the Evacuation Status Category



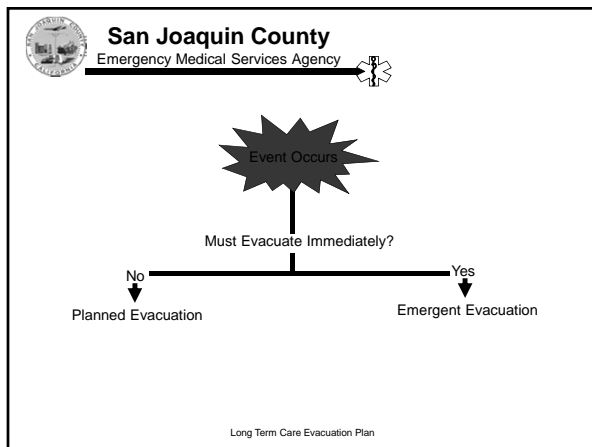
 **San Joaquin County**
Emergency Medical Services Agency

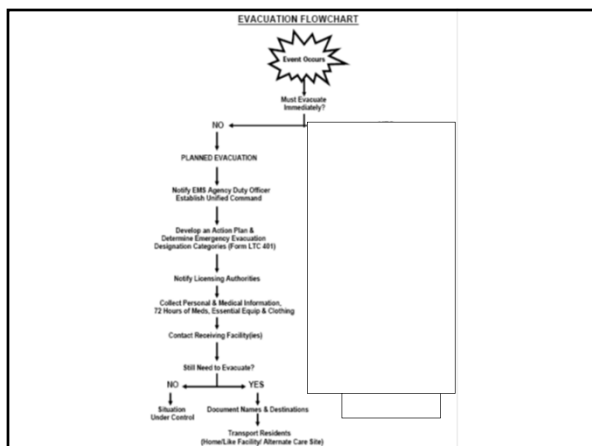
■ **Summary**

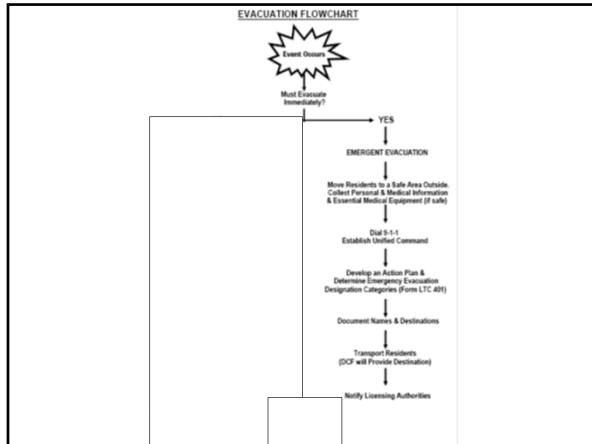
- Evacuation Flowchart
- Facility Evacuation Checklist



Long Term Care Evacuation Plan







FACILITY EVACUATION CHECKLIST

EMERGENCY EVACUATION

- Implement Facility Emergency Evacuation Procedures
 - Move patients/residents to safe area outside the facility
 - Recover pertinent personal and medical information, essential medications and medical equipment (if safe to do so)
- Dial 9-1-1
- Establish Contact and Unified Command with First Responder agency
 - Develop and Implement an Incident Action Plan
- Determine the Emergency Evacuation Designation Categories for patients/residents
 - Emergency Evacuation Destination Categories, Form LTC 401 (Appendix A)
 - Contact the families of Level II patients/residents for temporary transfer to a home setting
- Document the names and destinations of each evacuated patient/resident
 - Patient/Resident Transportation Summary Worksheet, Form LTC 403 (Appendix E)
- Notify Applicable Licensing Agency

PLANNED EVACUATION

- Notify the San Joaquin County EMS Agency Duty Officer
 - (509) 244-6332 or (209) 238-8339
- Establish Unified Command with EMS Agency Duty Officer
 - Develop and Implement an Incident Action Plan
- Determine the Emergency Evacuation Designation Categories for patients/residents
 - Emergency Evacuation Destination Categories, Form LTC 401 (Appendix A)
 - Contact the families of Level II patients/residents for temporary transfer to a home setting
- Notify Applicable Licensing Agency
- Collect pertinent personal and medical information, 72 hours of medications, essential medical equipment, and a change of clothing for each patient/resident
- Notify contracted receiving facilities

Facility Name	Address/Telephone Number
1.	
2.	
3.	
4.	
- Document the names and destinations of each evacuated patient/resident
 - Patient/Resident Transportation Summary Worksheet, Form LTC 403 (Appendix E)

San Joaquin County
Emergency Medical Services Agency

■ A Keep It Simple Tip!

- Keep extra copies of the Evacuation Flowchart and Facility Evacuation Checklist on a clipboard for easy access.
- Keep extra copies of the forms on a clipboard; especially the Emergency Evacuation Destination Categories Form (LTC 401)

Long Term Care Evacuation Plan



San Joaquin County
Emergency Medical Services Agency



Any Questions?

Long Term Care Evacuation Plan
